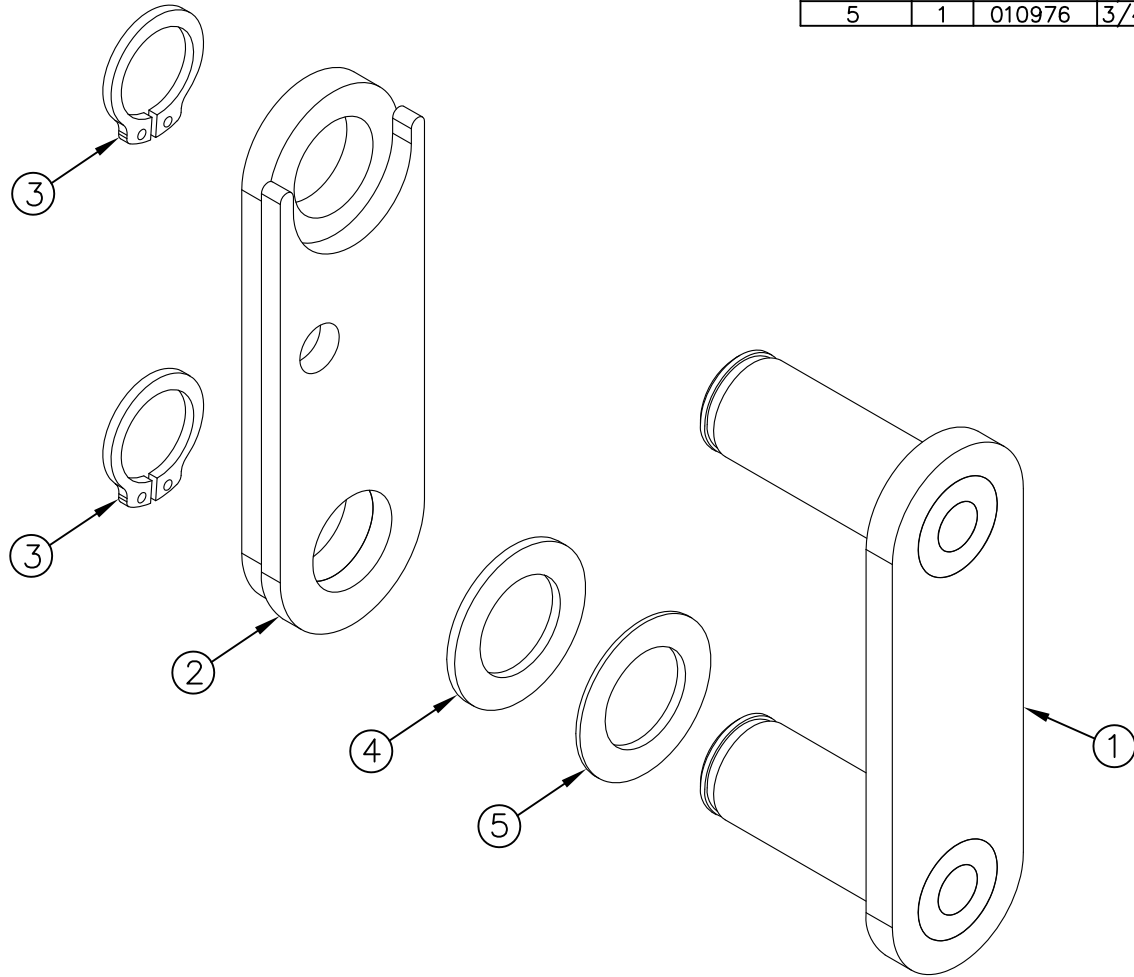


ITEM NO.	QTY.	PART NO.	DESCRIPTION
1	1	010673	G2 CLEVIS WELDMENT (42)
2	1	010674	WELDMENT - MASTER LINK GUIDE (G2-42)
3	2	002025	3/4" EXTERNAL SNAP RING(G2) PLATED
4	1	000622	3/4"IDx1-1/4"OD FLATWASHER(650)PLATED
5	1	010976	3/4"IDx1-1/4"O.D. THIN FLATWASHER (ZP)



						THIRD ANGLE PROJECTION	FILENAME:	WOODBINE MFG. CO. BUS BROWN DRIVE WOODBINE, IOWA 51579
							SYMBOLY PER ANSI Y14.5	NOTES:
						DECIMAL 2PLC 3PLC	DRAWN BY. JCB	712-647-2050
						MACHINE SAW, DRILL .030 .015	DRAWN/DATE 6/3/11	
						SHEAR, PUNCH FORM .060 .030	APPVD/DATE	THE INFORMATION HERE IS CONFIDENTIAL AND MUST NOT BE USED IN ANYWAY DETRIMENTAL TO THE INTEREST OF WOODBINE MFG.
A	6/3/11	RELEASED TO PRODUCTION	JCB	449		TORCH, WELDING ROUGH CAST .090 .060	TITLE G2 REPLACEMENT CYLINDER CLEVIS ASSEMBLY	
REV.	DATE	CHANGE RECORD	BY	APPVD	ECN	DRAFT 2*	SALES CATEGORY	PRODUCT LINE
						ANGULAR ±1*	SCALE 3:4	FIN. WT.
							PART NO. 11306	