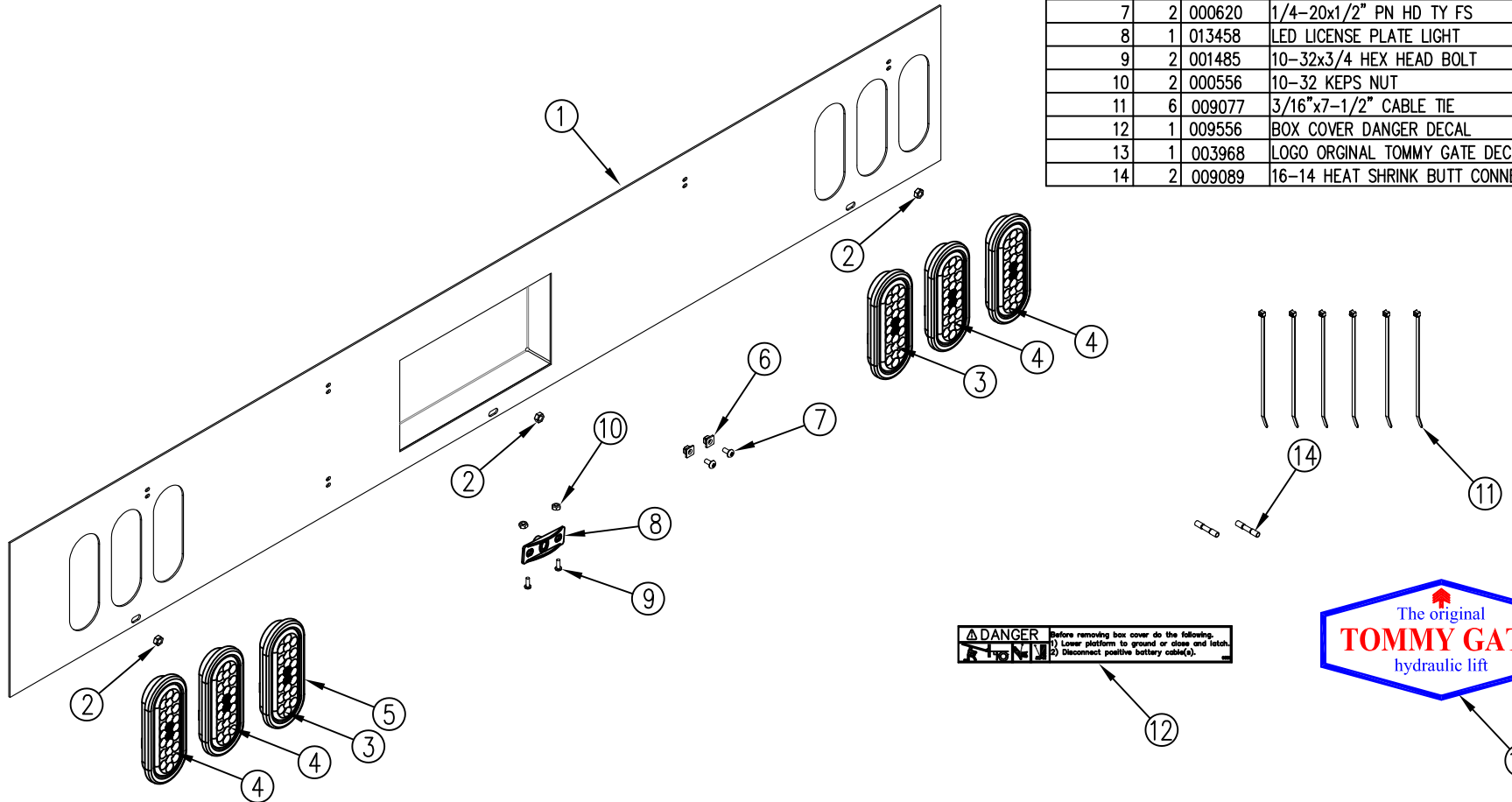


ITEM NO.	QTY.	PART NO.	DESCRIPTION
1	1	014409	BOX COVER WELDMENT (25/30) 89 (BF)
2	3	000631	5/16-18 SERRATED FLANGENUT (WHIZLOCK)
3	2	004119	RECESSED OVAL CLEAR LIGHT ONLY-LED (12VDC)
4	4	004046	RECESSED OVAL RED LIGHT ONLY-LED(12VDC)
5	6	004041	BLACK GROMMET - ECONO 60
6	2	000628	LICENSE PLATE NUT
7	2	000620	1/4-20x1/2" PN HD TY FS
8	1	013458	LED LICENSE PLATE LIGHT
9	2	001485	10-32x3/4 HEX HEAD BOLT
10	2	000556	10-32 KEPS NUT
11	6	009077	3/16"x7-1/2" CABLE TIE
12	1	009556	BOX COVER DANGER DECAL
13	1	003968	LOGO ORIGINAL TOMMY GATE DECAL
14	2	009089	16-14 HEAT SHRINK BUTT CONNECTOR



⚠ DANGER Before removing box cover do the following:
 1) Lower platform to ground or close and latch.
 2) Disconnect positive battery cable(s).



REV.	DATE	CHANGE RECORD	BY	APPVD	ECN	DRAFT	ANGULAR	SCALE	FIN. WT.	PART NO.
A	5/10/23	RELEASED TO PRODUCTION	AAS		2866	2'	±1'	NTS		18022

THIRD ANGLE PROJECTION		SYMBOLY PER ANSI Y14.5		NOTES:	WOODBINE MFG. CO. BUS BROWN DRIVE WOODBINE, IOWA 51579
DECIMAL	2PLC	3PLC	DRAWN BY.		
MACHINE SAW, DRILL	.030	.015	AAS		
SHEAR, PUNCH FORM	.060	.030	DRAWN/DATE		
TORCH, WELDING ROUGH CAST	.090	.060	5/10/23	THE INFORMATION HERE IS CONFIDENTIAL AND MUST NOT BE USED IN ANYWAY DETRIMENTAL TO THE INTEREST OF WOODBINE MFG.	
TITLE				REPLACEMENT STEEL BOX COVER W/LED LIGHTS (25/30) 89 (BF)	